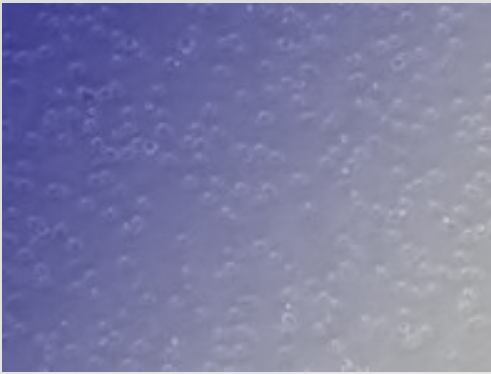
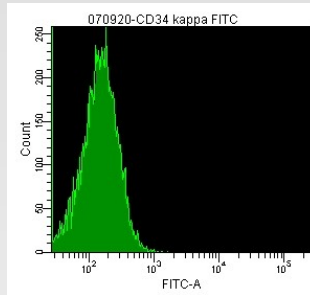


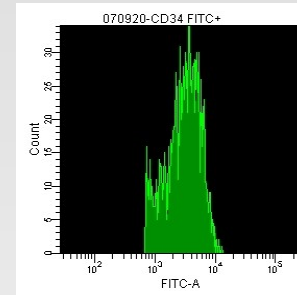
CD34+ Hematopoietic Stem Cells



CD34+ stem cells are robotically isolated from fresh cord blood using antibody based separation and then expanded. CD34+ stem cells have been used by stem cell scientists for a variety of purposes including ex vivo expansion, tissue differentiation and immunological applications.



CD34 kappa FITC



CD34 +

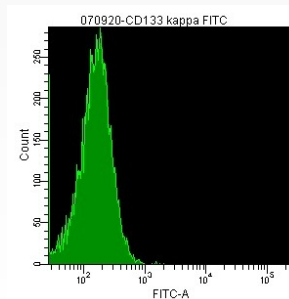
Ordering Information

CET Catalog #	Quantity
HCD34-100	100,000 cells
HCD34-500	500,000 cells
HCD34-1000	1,000,000 cells

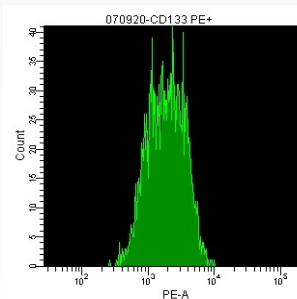
CD133+ or Prominin-1 Hematopoietic Stem Cells



CD133+ or Prominin-1 expressing cells are more primitive and rarer stem cells than their CD34+ counterparts and also used in a variety of hematological and immunological applications.



CD133 kappa FITC



CD133 +

Ordering Information

CET Catalog #	Quantity
HCD133-100	100,000 cells
HCD133-500	500,000 cells
HCD133-1000	1,000,000 cells

All CET stem cells are characterized and tested with a panel of known stromal, stem and hematopoietic markers. Each cell type is analyzed by flow cytometry to ensure >95% purity. All stem cells test negative for HIV-1, HIV-2, Hepatitis B and Hepatitis C.